

Four-Legged Angular Towers

Available in heights of 30 to 100m

Designed for primary cellular and MW backbone sites or central communication hubs

Lower freight cost due to freight efficiency

Available with a large variety of accessories that can be easily mounted at any stage

Enables easy reinforcement of legs at the site

Modular design to fit a specific site design and enable last-minute modifications

Advantages of self-supporting tower

- Opportunity to host multiple operators
- Leasing possible
- Customized design and structural detailing
- Easy and quick to assemble
- Eco-friendly, Construction friendly

Tower Features

- Designed for 42 m/s wind load fully operation
- Designed to fit antenna equipment 8 square. M or more
- Quick and easy installation

Accessories:

- Working and rest platforms
- Horizontal cable gantries
- Antenna mounts
- Anti-climb guard & other safety devices
- Paint kit (ICAO standards)
- Obstruction lighting system (ICAO standards)
- Lightning protection kit

Optimal Height

30 to 100m

Materials:

- Legs ST 52-3
- Braces and plates ST 37-2

Connections

Bolts (ISO 8.8, SAE Grade 5, or ASTM A-325) + flat washers, nuts and spring washers (5% hardware overage)

Anti-Corrosion Treatment

All steel elements can be hot-dip galvanized (ASTM A123) Paint kit (white/red)

Anchoring

Anchor rods (ASTM F1554) used with leveling nuts and a positioning template

Ladder:

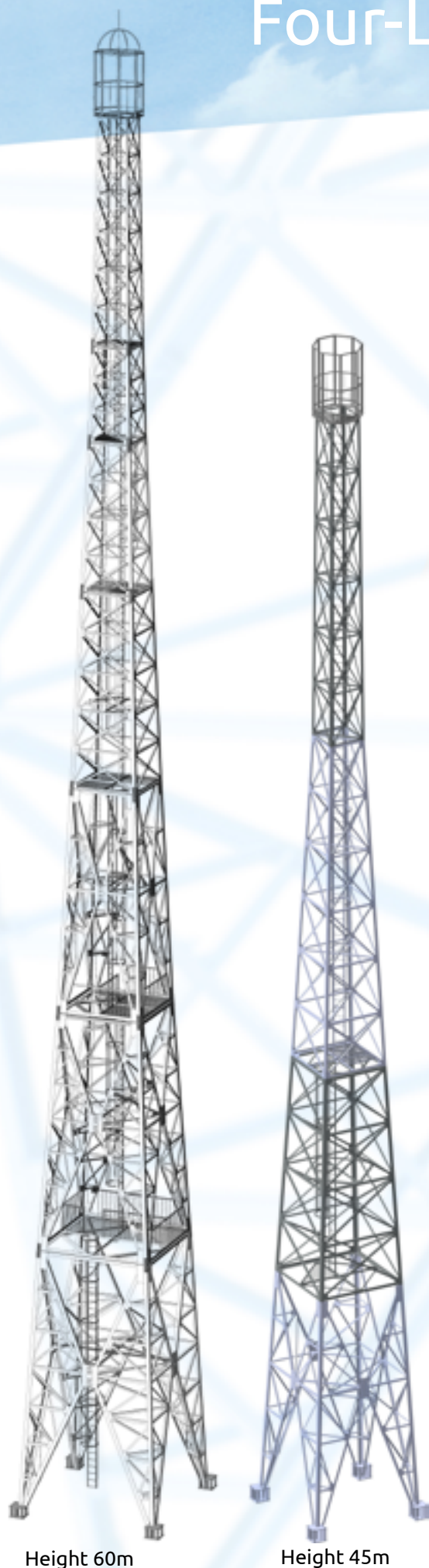
- Caged or open ladder with safety climbing line or rail
- Vertical cable hangers

Shipment:

Standard 20' to 40' ISO container

Documentation:

- Detailed packing list
- Installation & maintenance manual
- Foundation design



Height 60m

Height 45m

