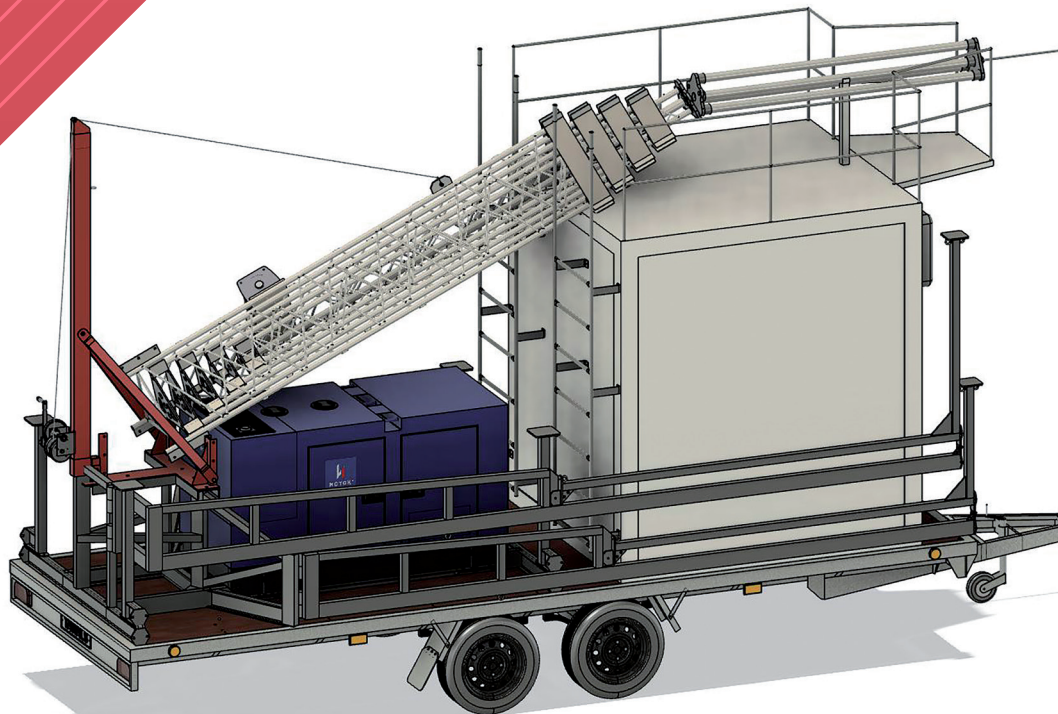


# CELL ON WHEELS

## 3/18/23-K

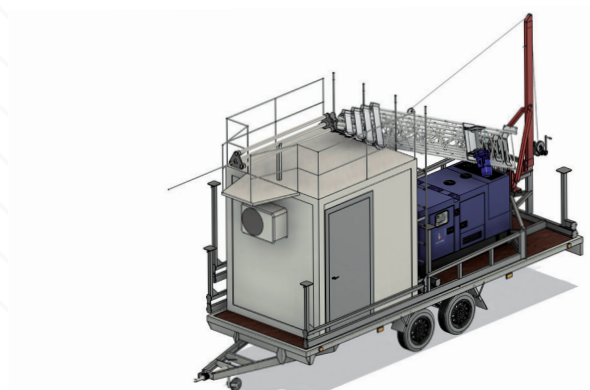
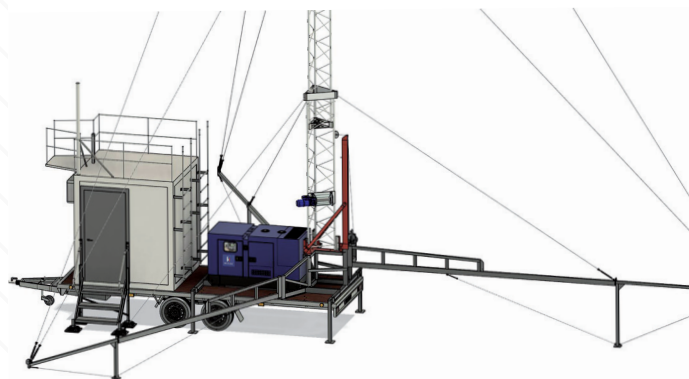


**STROMMONTAZH**  
strommontazh.com



# INFORMATION ABOUT THE PRODUCT

A cell on wheels (COW), supplied by «Enterprise «Strommontazh»» LLC is designed to accommodate technological and telecommunication radio communication equipment.



- Internal dimensions of the control room PBS container:  
1800x2000 mm, height 2200 mm.
- Dimensions of the platform for transportation and placement of the COW container: width - 2100 mm;  
length - 6120 mm.
- Dimensions of the trailer:  
7505x2160x810mm.
- Temperature and humidity conditions of the container COW: ambient temperature from - 22 °C to + 40°C;
- Mast height - 18 m from ground level (top of pipe racks).
- Outrigger height - 9 m.
- Pipe racks - 3 pieces, length - 2 m.
- Pipe rack on the container for radar line height 2m (folding).
- Diesel generator with automation - 12 kW.(Dimensions: 1800x860x1090)
- Total weight of PBS - up to 3300 kg.

**Warranty period - 12 months**  
from the date of shipment from the manufacturer, subject to observance of transportation, storage, and operating conditions

In the upper part of the container, there is a service platform. On the podium for COW transportation, there are structures and assemblies for antenna support, outriggers, and generator mounting. For the transportation and location of the COW in the broadcasting point a platform based on the START-3 V6020/35 vehicle trailer is used. The bearing structure of the COW container is a steel frame made of steel profiles. The container is equipped with air conditioning, heating, ventilation, lighting, power supply, security, and fire alarm systems. The walls of the container are made of sandwich panels filled with polyisocyanurate foam (PIR) - a three-layer structure that consists of steel sheets and put between them insulation with a low

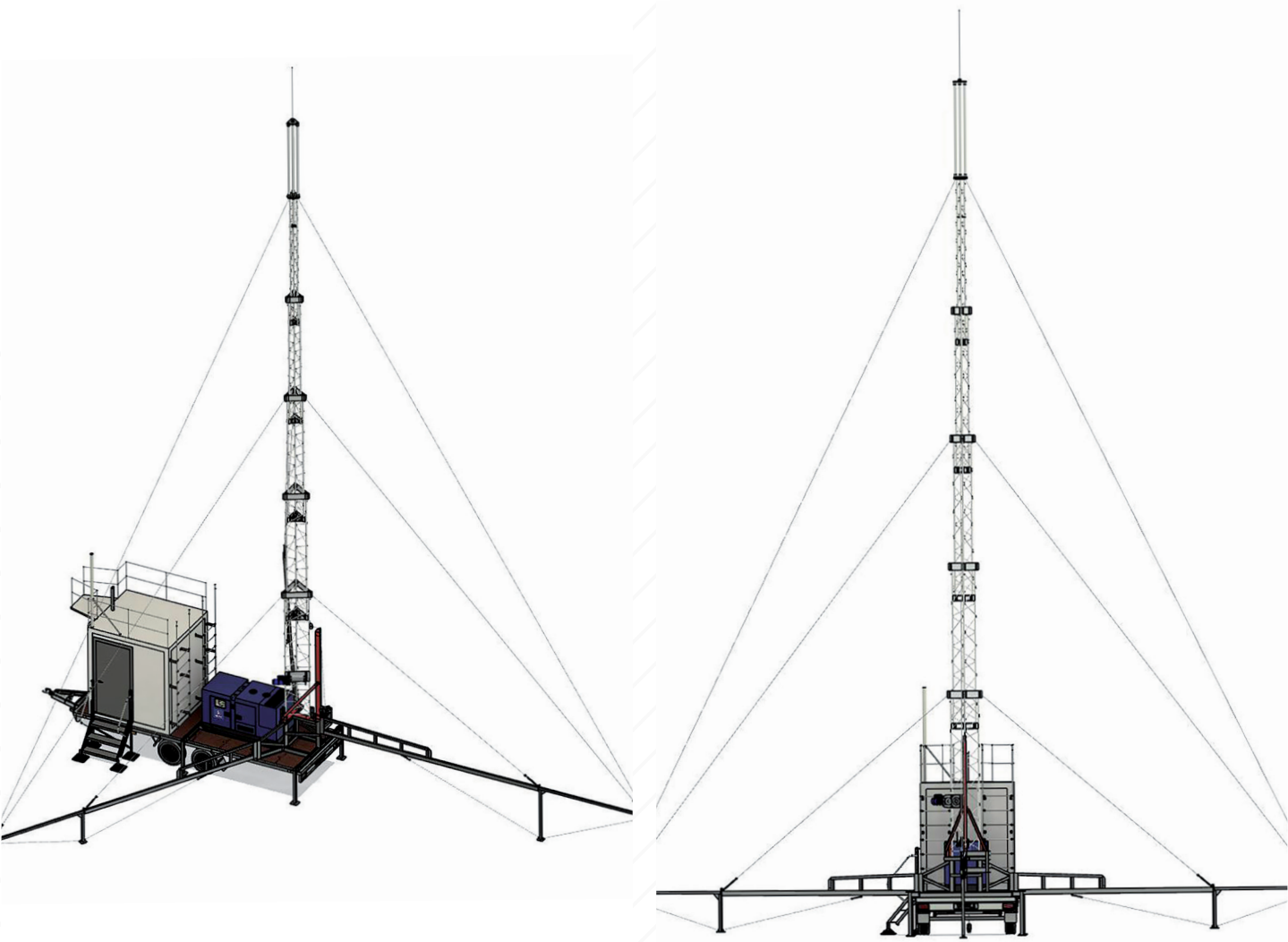
coefficient of thermal conductivity. Joints between the walls and the floor in the control room are closed with a metal plinth. Floor covering - antistatic linoleum. The PBS container is equipped with stationary ladders for climbing up the roof of the container to the service platforms. The 2-axle O2 category trailer with improved load-carrying capacity is equipped with 2 axles and a 3500 kg roll-brake. Operation requires category BE.

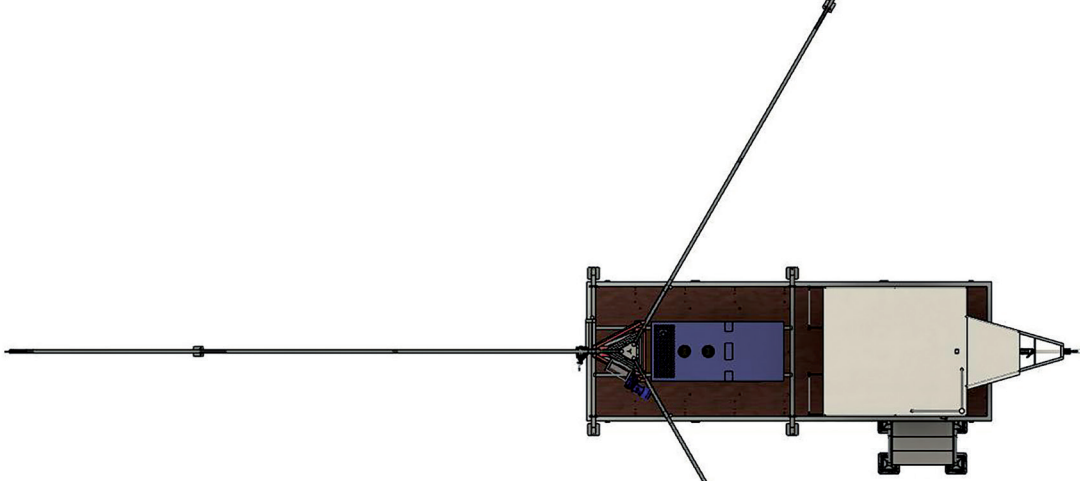
**The telescopic retractable mast** is a triangular aluminum section with an uprighting system.

The retractable antenna mast is designed for use in I, II, III - wind, ice, snow, and climatic regions.

To install the mast structure in IV and V wind, ice, snow, and IV climatic regions, additional modifications to the mast structure and outriggers are required based on the technical requirements of the Customer.

- Height of mast in folded position with tube mast unit ..... 6,15 m
- Height of fully unfolded mast with pipe rack assembly, m ..... 17.2 m
- Number of sections ..... 5
- The cross-sectional dimension of the lower section is ..... 616 mm
- The size of the top section in the cross-section is ..... 200 mm
- Weight of the mast ..... 141 kg





### Delivery set includes::

- container for mobile base station complete ..... 1 pc.
- antenna support 17,2 m ..... 1 pc.
- antenna support luffs with outriggers ..... 1 pc.
- electric winch with cable lifting system ..... 1 pc.
- horizontal lifting system ..... 1 set.
- lightning protection system ..... 1 set.
- stationary ladder for climbing to the roof of the container ..... 2 pcs.
- split-system air conditioner ..... 1 pc.
- electric convector ..... 1 pc.
- switchboard assembly ..... 1 pc.
- main grounding busbar ..... 1 pc.
- cable gauge ..... 6.5 m.s.
- internal lamp ..... 2 pcs.
- single-coupling switch 220V ..... 1 pc.
- double socket ..... 1 pc.
- single socket ..... 3 pcs.
- generator external socket ..... 1 pc.
- feeder gland ..... 1 pc.
- lightning protection/earthing cable, terminated, 4 m/n ..... 2 pcs.
- diesel generator in protective shelfer with automation ..... 1 pc.
- fire extinguisher ..... 2 pcs.
- technical certificate for the container COW ..... 1 pc

### Additional options :

- lantern mounting unit and light fence ..... 1 set.
- telecommunication cabinet with a power supply unit  
«Stil» PS48-0080-3U (4/100) with 4 accumulator batteries and .... 1 set.
- Telecommunication cabinet 630/10-44G-C ..... 1 set.



**STROMMONTAZH**

strommontazh.com

+79788215001 | sales@strommontazh.com

  Strommontazh