



**STROMMONTAZH**

**CELL ON WHEELS**

**2/18–3,0 MBS**



[strommontazh.com](http://strommontazh.com)

# GENERAL INFORMATION ABOUT THE PRODUCT

Shelter for mobile base station (shelter MBS), supplied by «Strommontazh Company» LLC, is intended for an installation of technological tele- and radio-communication equipment.

## ↗ The external dimensions of shelter MBS:

- height – 2850 mm;
- width – 1820 mm;
- length – 3000 mm.

## ✕ The external dimensions of shelter MBS:

- height – 2500 mm;
- width – 1700 mm;
- length – 2850 mm.

## ↑ The upper platform dimensions for maintaining:

- width – 650 mm;
- length – 3000 mm.

## ↓ The dimensions of platform (chassis) for shelter MBS transportation and storage:

- width – 2300 mm;
- length – 4000+1100 mm.

## 💧 The temperature and humidity conditions of shelter MBS exploitation:

- ambient temperature from  $-22^{\circ}\text{C}$  to  $+25^{\circ}\text{C}$ ;
- relative humidity to 98%.

## 💎 The weight of shelter MBS in compilation – 1500 kg.

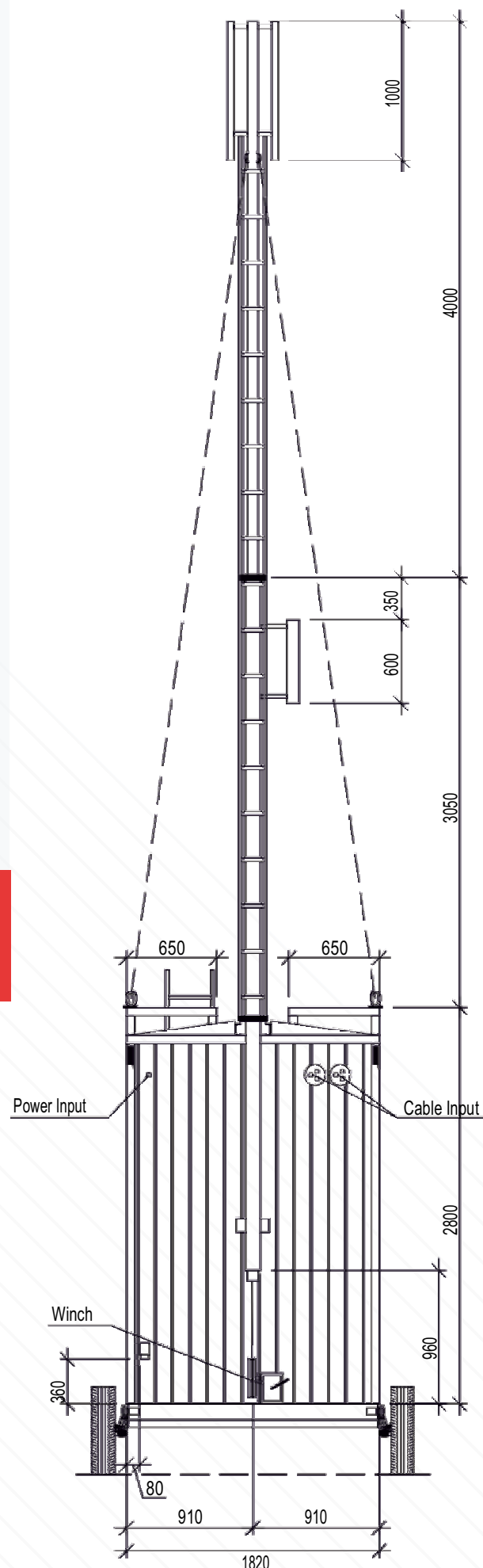
## 🕒 Service life – 10 years.

**Guarantee period – 12 months** since the day of shipment from the company–manufacturer with the implementation of transportation, storage and exploitation conditions.

**Shelter MBS is in the form of a rectangular parallelepiped double-tilt roof.** Two maintaining platforms and hubs for transportation and attachment of the antenna foundation in a vertical position are placed in the upper part of the shelter. The shelter has got guaranteed estimate of rigidity, strength and thermotechnical characteristics for placement in mountain regions at the altitude of 1800–3700 m above sea level.

**The platform on the base of the automobile trailer chassis KNOTT D-83125, type KF 27 of 2700 kg carrying capacity** is used for the transportation and placement of shelter MBS in the spot of broadcast.

**The supporting structure of shelter MBS is a steel carcass made of shaped tubes.** Outside and inside the shelter carcass is lined with galvanized shaped slate of 0,5 mm width (C10-1000-0,5) with white polymeric coverage. In the carcass there are fixtures for the equipment installing, brackets of cable hods and lifting







## DELIVERY SET CONSISTS OF:

- |   |         |   |           |
|---|---------|---|-----------|
| • shelter for mobile base station in compilation .....          | 1 pc;   | • main grounding tyre MGT .....                                       | 1 pc;     |
| • antenna foundation (compound, of two parts) .....             | 1 pc;   | • cableway .....  | 6,5 r.m.; |
| • rods of the antenna foundation with turnbuckles .....         | 5 sets; | • internal wall and ceiling lamp .....                                | 2 pc;     |
| • mechanical manual winch with cable system .....               | 1 sets; | • one-pole switch 220 V .....   | 1 pc;     |
| • stationary ladder for a lift to the roof of the shelter ..... | 1 pc;   | • double socket .....   | 1 pc;     |
| • floor air conditioner Uniel TAC-12CPA/V .....                 | 1 pc;   | • single socket .....   | 3 pc;     |
| • electrical convector Atlantic F 119 500 .....                 | 1 sets; | • external connector of the generator .....                           | 1 pc;     |
| • switchboard SB-40A-B-M in compilation .....                   | 1 pc;   | • feeder sealed lead-in .....   | 2 pc;     |
|   |         | • cable for protection against lightning/grounding ended, 4 r.m. .... | 2 pc;     |
|   |         | • protection cover for generator grounding .....                      | 1 pc;     |
|   |         | • carbon-dioxide-3 fire extinguisher ...                              | 2 pc;     |
|   |         | • technical passport on shelter MBS ....                              | 1 pc.     |

## TRANSPORTATION AND STORAGE INSTRUCTIONS.

Shelter for mobile base station can be transported by standard road freight transport in a set to the automobile trailer form and by railway transport.

**The vehicle speed during the transportation of shelter MBS should not exceed:**

- 50 km/h on roads with asphalt surfacing;
- 30 km/h on roads with crushed stone and cobblestone surfacing;
- 15 km/h on roads with ground surfacing.

It is permitted to store shelter MBS in the open air in a set to the automobile trailer form.

It is not permitted to install shelter MBS in snow, water and mud to prevent the floor and wall insulation from humidification.