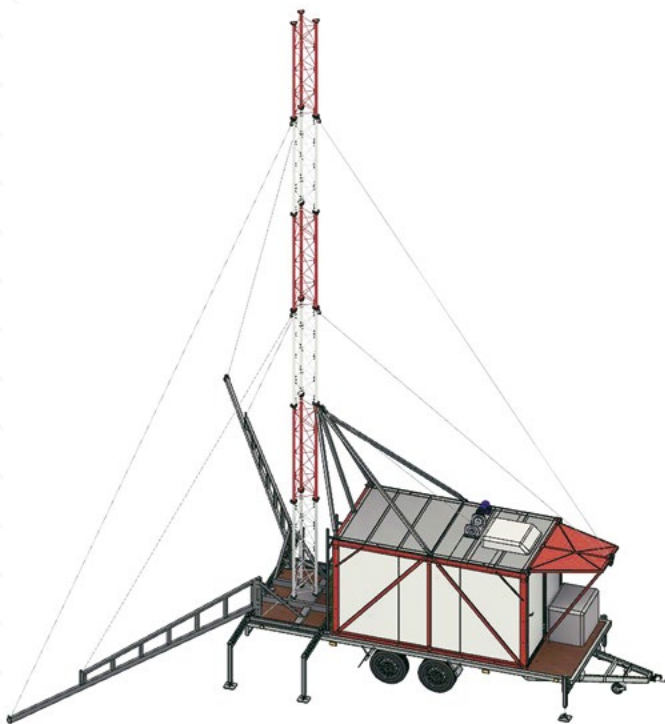




STROMMONTAZH
strommontazh.com

CELL ON WHEELS **12 M** 4-12-24K





Cell on Wheels (COW) Strommontazh is designed to accommodate and operate the equipment of a cellular base station, exclude unauthorized access to the equipment and maintain the required temperature inside. COW is used to increase the capacity of a cellular network or create a coverage area due to a sharply increasing load in a local region for a limited period. The permanent presence of personnel for operation is optional.

Application range:

- in places of liquidation of consequences of emergencies;
- when providing communication in the places of work and the absence of fixed and mobile communications (construction in hard-to-reach places, mines, pipelines, etc.);
- in case of damage to fixed communication networks

The design of the COW provides for transportation by car on public roads. BE license required

TERMS OF USE

The control room ensures the operation of the equipment in a temperate climate with an ambient temperature of -22°C to +40°C. The microclimate maintenance system ensures the temperature inside the control room from +10°C to +25°C.

The mast allows the operation of COW in conditions of 1-7 wind regions. When using the hardware COW in conditions of 4-7 wind regions, installing an additional tier of braces made of steel ropes with fastening to the ground is necessary.

STRUCTURAL EXECUTION

- Dimensions 6120mm * 2100mm * 2980mm
- The van is made of galvanized steel panels (with a wall insulation thickness of 80 mm) painted with powder enamel.
- The van's roof is equipped with non-slip platforms.
- Floor covering - antistatic linoleum.
- Inside the van are installed mortgages for attaching telecommunications equipment.
- Mounts are provided on the body for mounting the mast. A mechanical winch is used to lift the mast.

POWER SUPPLY

The hardware COW has a sealed input for connecting an external power supply. The power supply of the hardware COW equipment is provided from the following sources:

- from a 5-wire three-phase industrial AC network with a voltage of 380V, a frequency of 50 Hz. To connect to an industrial network, the control room includes a reel with a power cable 50 m long;
- from an autonomous power supply (diesel or gasoline generator set) 220 V;
- from a group of 48V batteries located in the power supply rack (option).
- Introductory shields are equipped with feed-through connectors.

MAST

The set of the control room COW includes a prefabricated steel mast 12 m high. The support is attached to the control room from the outside, on the wall of the control room. The mast is fastened with bolted connections, using rigid struts and steel ropes (if necessary).

When using COW in conditions of 4-7 wind regions, the mast provides for the installation and fastening of additional guy wires made of steel ropes.

The mast is raised and lowered using a mechanical winch.

SECURITY AND FIRE ALARM SYSTEM

The security and fire alarm of the hardware COW is implemented based on the receiving and control security and fire device.

GROUNDING SYSTEM

To organize grounding, the hardware COW set includes 2 ground pins with connecting wires with a cross-section of 16 square meters. mm for connection to the control room ground loop.

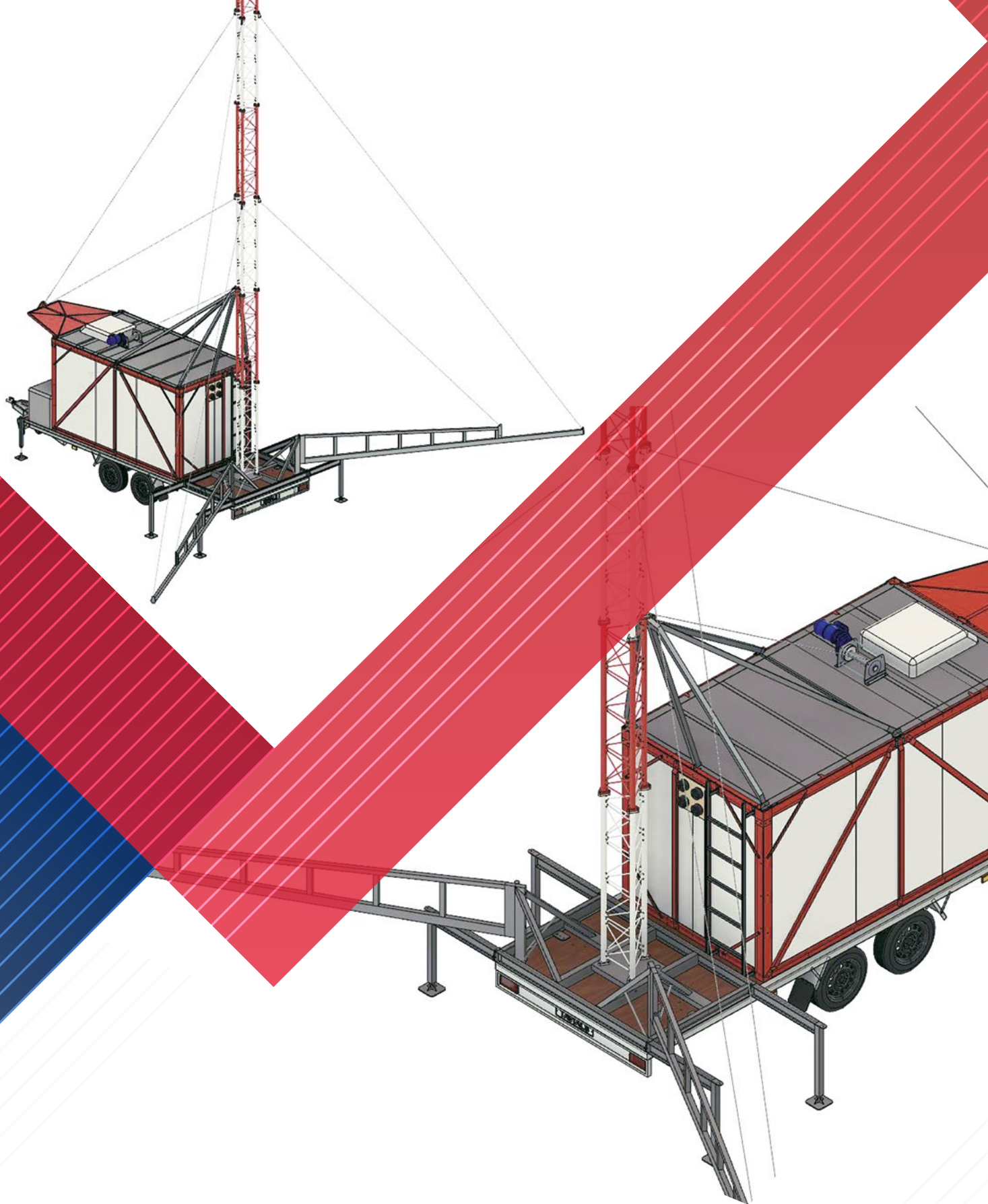
CERTIFICATION.

The vehicle (trailer) is certified.
The container and mast are installed as cargo on the factory trailer.

PART OF THE EQUIPMENT

- a ladder for climbing to the roof
- 1 door size 1800x600 mm
- hitch
- inertial braking system
- parking brake
- outriggers
- support legs
- a winch
- braces from galvanized steel pipes
- mortgages for communication equipment
- cable trays and boxes
- fire alarm system
- supply and exhaust ventilation system
- main and emergency lighting system
- cable input of power supply, equipped with connectors for connecting an external network, a diesel power plant, and a ground cable for a wing nut
- cable gland for RF cables, equipped with a panel for six 7/16 connectors and six 4.3-10 connectors (optional) for connecting BS antennas, two N-type connectors for connecting an external PPC unit, and a ground cable for a wing nut
- cable entry for optical cables (optional)
- fastening places and boxes for storage of the transportable property
- fasteners for mounting the antenna support
- antenna support complete with fasteners and hardware
- group ground bus
- car air conditioner roof version with a capacity of 2 kW
- electric heater for wall-mounted design with a power of 1.5 kW
- portable internal combustion engine generator set with a capacity of 8 kW 220 V
- coil with 5-wire cable 50m
- lightweight pipe rack on a supporting cruciform frame (optional)





STROMMONTAZH

strommontazh.com

+79788215001 | sales@strommontazh.com

  Strommontazh